



## OPTIONS

---

### Housing

- European coniferous wood
- hardwood of European origin
- oiled exotic wood
- premium exotic wood

### Mounting method

- to screw

### Ashtray

- with an ashtray

### Contribution

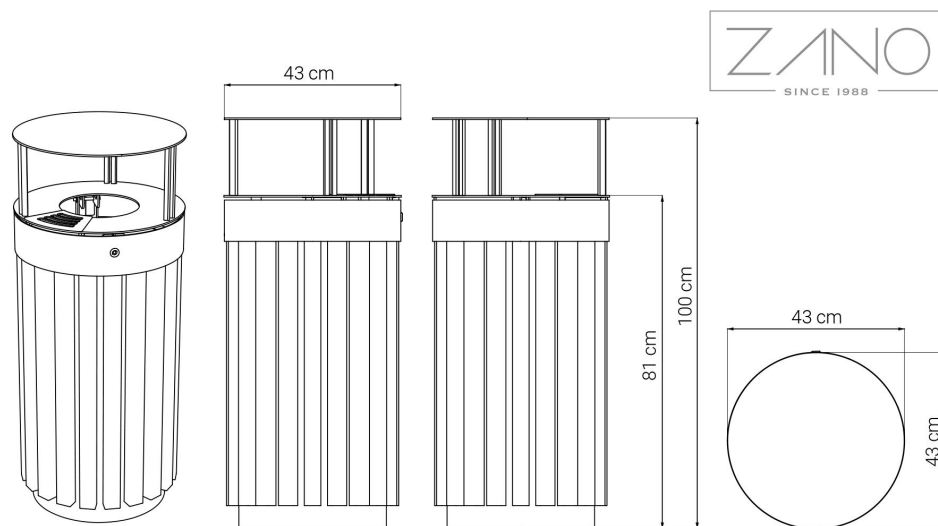
- galvanized sheet insert
- insert from galvanized sheet painted

## DESCRIPTION

---

Tubus basket adorned with wooden slats. This model features both a built-in ashtray and a protective canopy. The basket's framework consists of stainless steel. Customers also have the option to select carbon steel, which is galvanized and powder-coated in a choice RAL color of their preference.

The wood incorporated in this product is pine from European sources, finished with a protective varnish and available in a variety of color options. For an additional fee, customers can opt for exotic wood, noted for its enhanced durability and resistance to the elements. The design of the Tubus basket allows for easy access to the interior. It includes a removable liner made of galvanized sheet metal with a 65 L capacity. The top of the basket is secured with a lock and swings open for convenience.



## GENERAL TECHNICAL DATA

### Dimensions

- width: 17 in
- height: 39 1/4 in
- depth: 17 in

### Capacity

- capacity: 17 1/4 gal

### Materials

- stainless steel or carbon steel
- insert made of powder-coated galvanized sheet metal

ZANO



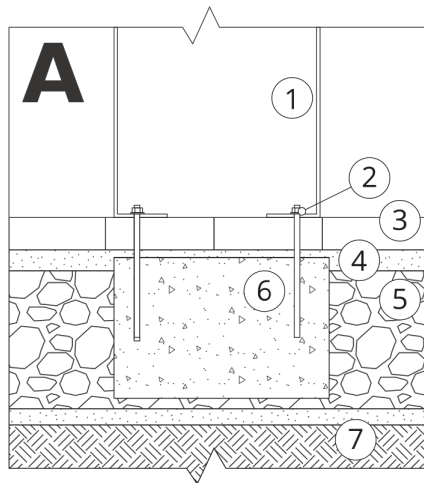
*Iwona Żaczek*

Product:  
Tubus ashtray basket  
Catalog number: **03.053.8**  
Designer: Iwona Żaczek

In accordance with the Polish Law on Copyright and Related Rights of 04.02.1994 (Official Journal of Laws No. 24, item 83, corrected: Journal of Laws No. 43, item 170) and in accordance with the EU copyright legislation including all EU directives and regulations on copyright, Zano Mirosław Zarotynski Company, reserves the copyright of drawings, descriptions, 3D models, renderings, graphics, content contained in offers, attachments to offers and all other documents. Its content is the intellectual property of ZANO Mirosław Zarotynski company. The use of author's ideas, solutions, copying, distribution of photos, graphics or fragments of graphics, descriptive texts, for profit, without the permission of the author - ZANO Mirosław Zarotynski company - is prohibited and constitutes a copyright infringement and is punishable.

**NOTE: The drawings do not reflect the actual dimensions of the foundation. These are only sample installation diagrams taking into account the type of anchoring and the material of the substrate to which to attach the furniture.**

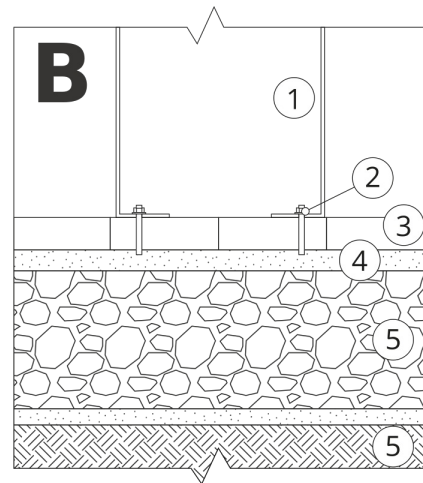
The size of the foundation depends on local foundation conditions.



### INSTALLATION TO PAVING WITH FOUNDATION

#### Installation description

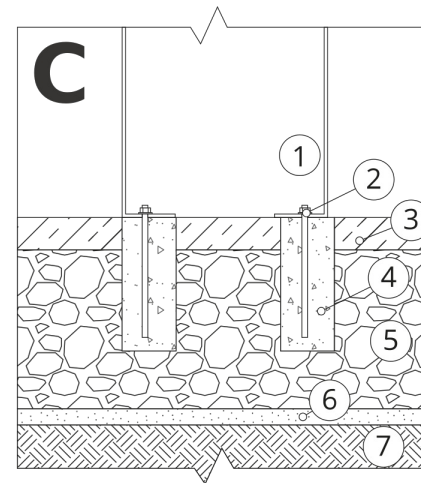
1. ZANO product
2. Quick-attachment / quick-attachment or chemical anchor
3. Stone paving / concrete paving / stone slabs / concrete slabs
4. Sand ballast (approximately 2 - 4 cm)
5. Stone aggregate substructure
6. Concrete foundation of C16/20 class (top surface of concrete 10 cm below paving surface)
7. Local land



### MOUNTING TO PAVING

#### Installation description

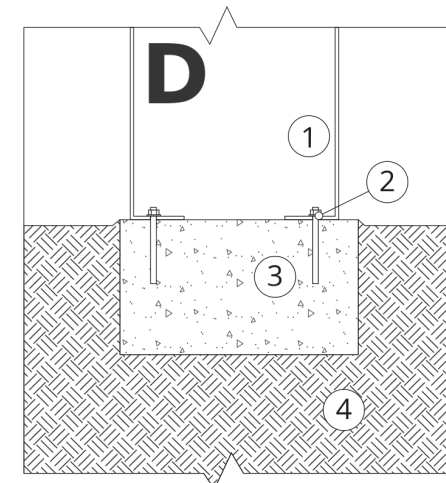
1. ZANO product
2. Quick-attachment / quick-attachment or chemical anchor
3. Stone paving / concrete paving / stone slabs / concrete slabs
4. Sand ballast (approximately 2 - 4 cm)
5. Stone aggregate substructure
6. Local land



### MOUNTING TO CONCRETE / ASPHALT

#### Installation description

1. ZANO product
2. Quick-attachment / quick-attachment or chemical anchor
3. Fixed restrained surface, such as concrete or asphalt
4. Concrete foundation of C16/20 class (top surface of concrete 10 cm below paving surface)
5. Stone aggregate substructure
6. Sand ballast (approximately 2 - 4 cm)
7. Local land



### MOUNTING TO CONCRETE FOUNDATION

#### Installation description

1. ZANO product
2. Quick-attachment / quick-attachment or chemical anchor
3. Concrete foundation of C16/20 class (top surface of concrete 10 cm below paving surface)
4. Local land